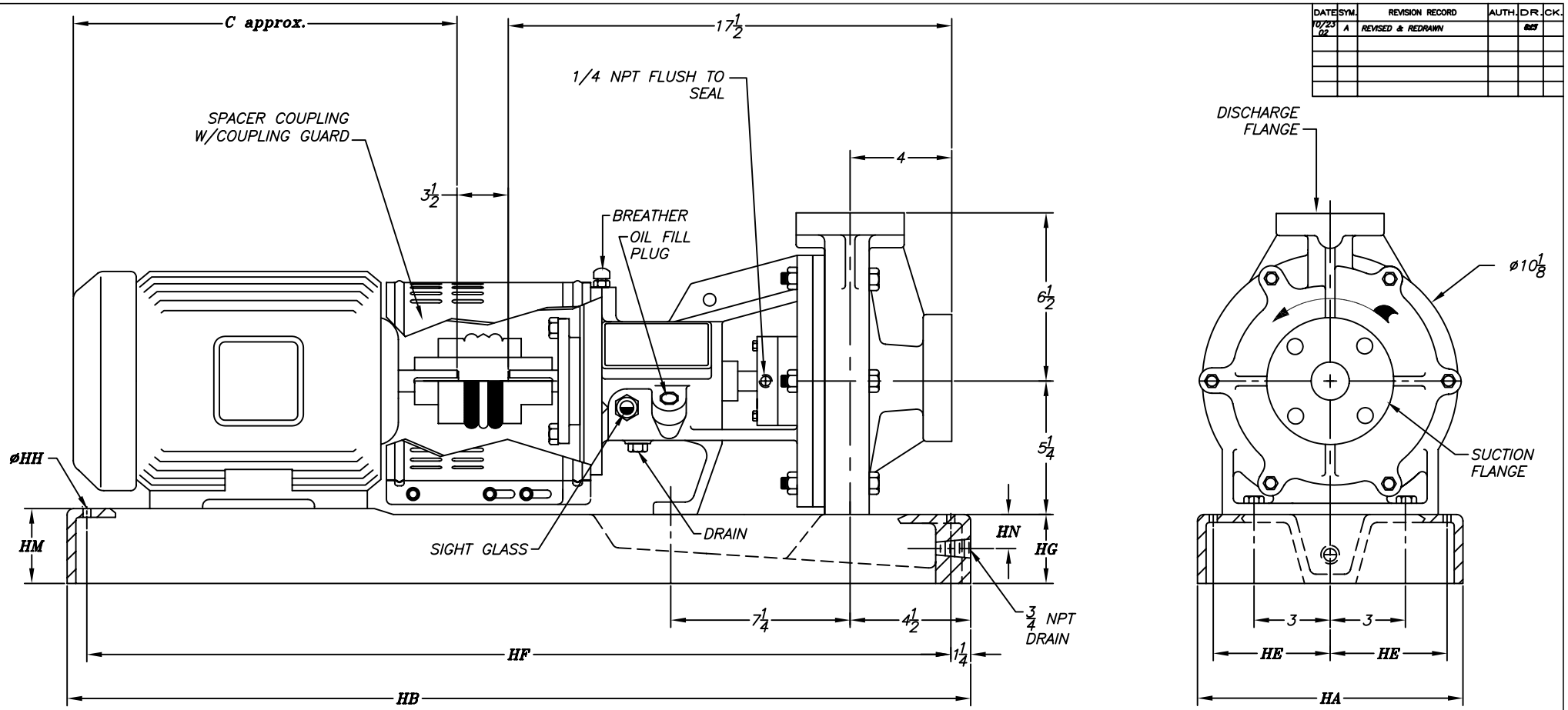


DATE	SYM.	REVISION RECORD	AUTH.	D.R.	CK.
07/23/02	A	REVISED & REDRAWN			



MOTOR FRAME	C
143T/145T	13
182T/184T	15 5/8
213T/215T	19 1/4
254T/256T	25 1/2

MOTOR		
HP	RPM	
PH	HZ	VOLTS
ENCL.		
FRAME		

FLANGE	O.D.	THICK.	B.C.	# OF HOLES	SZ. OF HOLES
1	4 1/4	7/8	3 1/8	4	5/8
1 1/2	5	1 1/8	3 7/8	4	5/8
2	6	1 1/8	4 3/4	4	3/4
3	7 1/2	1 1/8	6	4	3/4

PUMP SIZE	SUCT.	DISCH.	MOTOR FRAME	BASE PLATE	HA	HB	HE	HF	HG	HH	HM	HN
1X1-1/2X6	1 1/2	1	143T-184T	1T	10	35	4	32 1/2	2 5/8	3/4	3 3/8	1 11/16
			213T-215T	2T	12	39	4 1/2	36 1/2	2 7/8	3/4	2 7/8	1 15/16
			254T-256T	1	12	45	4 1/2	42 1/2	3 3/4	3/4	2 3/4	1 7/8
1-1/2X3X6	3	1 1/2	143T-184T	1T	10	35	4	32 1/2	2 5/8	3/4	3 3/8	1 11/16
			213T-215T	2T	12	39	4 1/2	36 1/2	2 7/8	3/4	2 7/8	1 15/16
			254T-256T	1	12	45	4 1/2	42 1/2	3 3/4	3/4	2 3/4	1 7/8
2X3X6	3	2	143T-184T	1T	10	35	4	32 1/2	2 5/8	3/4	3 3/8	1 11/16
			213T-215T	2T	12	39	4 1/2	36 1/2	2 7/8	3/4	2 7/8	1 15/16
			254T-256T	1	12	45	4 1/2	42 1/2	3 3/4	3/4	2 3/4	1 7/8
1X1-1/2X8	1 1/2	1	143T-184T	1T	10	35	4	32 1/2	2 5/8	3/4	3 3/8	1 11/16
			213T-215T	2T	12	39	4 1/2	36 1/2	2 7/8	3/4	2 7/8	1 15/16
			254T-256T	1	12	45	4 1/2	42 1/2	3 3/4	3/4	2 3/4	1 7/8

NOTES:
 (1) ROTATION IS COUNTERCLOCKWISE FACING SUCTION FLANGE
WARNING: DO NOT OPERATE WITHOUT LIQUID IN PUMP. DO NOT OPERATE IN REVERSE ROTATION.
 (2) ALL DIMENSIONS IN INCHES.
 (3) FLANGES ARE ASME/ANSI B16.5 CLASS 150lb. FLAT FACE.

CUSTOMER
CUST. P.O.#
TAG:
FYBROC S/N

Fybroc Division TELFORD, PA 18969

1500 SERIES GROUP 1 SCALE ~ DRAWN BY *SLJ* APPROVED BY

TITLE: **OUTLINE DRAWING WITH BASEPLATE**

DATE: 6/1/94 DRAWING NUMBER: **C 40094** REV. **A**