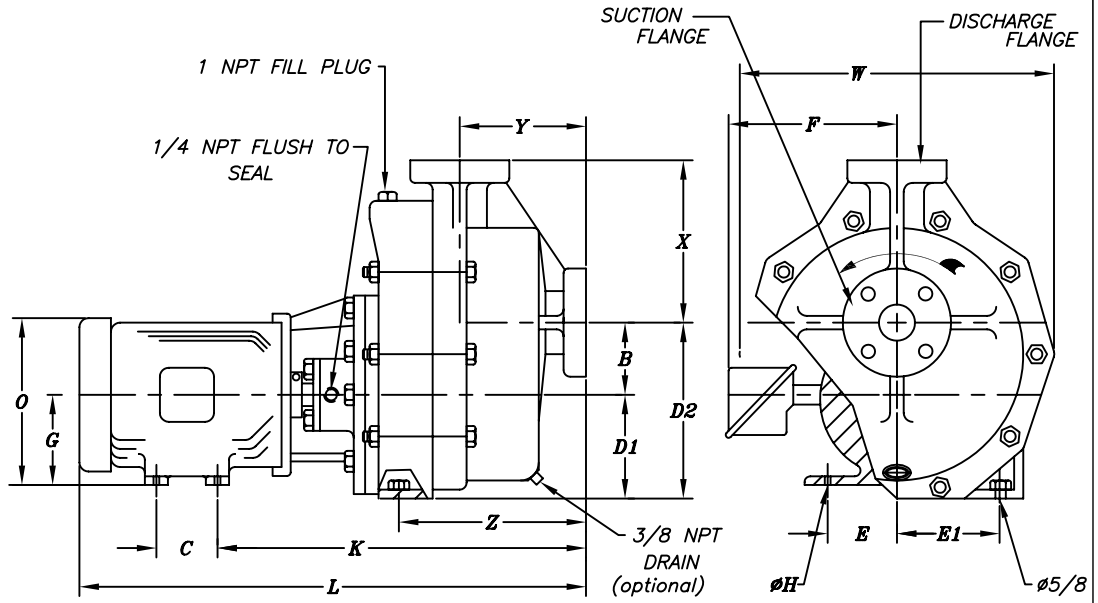


MOTOR		
HP	RPM	
PH	HZ	VOLTS
ENCL.		
FRAME		

MOTOR	PUMP	C	E	F(3)	G	H	K	L(3)	O(3)
143JM	2X3X10	4	2 3/4	6	3 1/2	11/32	22 7/16	30	7 1/8
	3X4X10						22 7/16	30	
	3X4X13						23 7/16	31	
	4X6X13						24 7/16	32	
145JM	2X3X10	5	2 3/4	6	3 1/2	11/32	22 7/16	31	7 1/8
	3X4X10						22 7/16	31	
	3X4X13						23 7/16	32	
	4X6X13						24 7/16	33	
182JM	2X3X10	4 1/2	3 3/4	7	4 1/2	13/32	23 3/16	32 3/8	9 3/16
	3X4X10						23 3/16	32 3/8	
	3X4X13						24 3/16	33 3/8	
	4X6X13						25 3/16	34 3/8	
184JM	2X3X10	5 1/2	3 3/4	7	4 1/2	13/32	23 3/16	33 3/8	9 3/16
	3X4X10						23 3/16	33 3/8	
	3X4X13						24 3/16	34 3/8	
	4X6X13						25 3/16	35 3/8	
213JM	2X3X10	5 1/2	4 1/4	8 13/16	5 1/4	13/32	24 1/16	35 1/16	11 1/4
	3X4X10						24 1/16	35 1/16	
	3X4X13						25 1/16	36 1/16	
	4X6X13						26 1/16	37 1/16	
215JM	2X3X10	7	4 1/4	8 13/16	5 1/4	13/32	24 1/16	36 9/16	11 1/4
	3X4X10						24 1/16	36 9/16	
	3X4X13						25 1/16	37 9/16	
	4X6X13						26 1/16	38 9/16	
254JM	2X3X10	8 1/4	5	10 7/16	6 1/4	17/32	24 9/16	38 1/8	13 1/2
	3X4X10						24 9/16	38 1/8	
	3X4X13						25 9/16	39 1/8	
	4X6X13						26 9/16	40 1/8	
256JM	2X3X10	10	5	10 7/16	6 1/4	17/32	24 9/16	39 7/8	13 1/2
	3X4X10						24 9/16	39 7/8	
	3X4X13						25 9/16	40 7/8	
	4X6X13						26 9/16	41 7/8	
284JM	2X3X10	9 1/2	5 1/2	11 3/8	7	17/32	24 9/16	39 3/4	14 5/8
	3X4X10						24 9/16	39 3/4	
	3X4X13						25 9/16	40 3/4	
	4X6X13						26 9/16	41 3/4	
286JM	2X3X10	11	5 1/2	11 3/8	7	17/32	24 9/16	41 1/4	14 5/8
	3X4X10						24 9/16	41 1/4	
	3X4X13						25 9/16	42 1/4	
	4X6X13						26 9/16	43 1/4	
324JM	2X3X10	10 1/2	6 1/4	13 5/16	8	21/32	25 1/16	41 3/4	16 11/16
	3X4X10						25 1/16	41 3/4	
	3X4X13						26 1/16	42 3/4	
	4X6X13						27 1/16	43 3/4	
326JM	2X3X10	12	6 1/4	13 5/16	8	21/32	25 1/16	43 1/4	16 11/16
	3X4X10						25 1/16	43 1/4	
	3X4X13						26 1/16	44 1/4	
	4X6X13						27 1/16	45 1/4	



PUMP SIZE	SUCT.	DISCH.	B	D1	D2	E1	W	X	Y	Z
2X3X10	3	2	6	8 1/4	14 1/4	6	22 7/8	10 1/2	8 1/4	12 1/4
3X4X10	4	3	6	8 1/4	14 1/4	6	22 7/8	10 1/2	8 1/4	12 1/4
3X4X13	4	3	7	10	17	8	26 1/2	11 1/2	8 7/8	13 1/4
4X6X13	6	4	7	10	17	8	28 1/8	13	9	14 1/4

FLANGE	O.D.	THICK.	B.C.	NO. OF HOLES	SZ. OF HOLES
2	6	1 1/8	4 3/4	4	3/4
3	7 1/2	1 3/16	6	4	3/4
4	9	1 3/8	7 1/2	8	3/4
6	11	1 9/16	9 1/2	8	7/8

NOTES:  
1. ALL DIMENSIONS IN INCHES  
2. FLANGES ARE ASME/ANSI B16.5 CLASS 150lb. FLAT FACE.  
3. DIMENSION BASED ON GENERAL ELECTRIC TEFC MOTOR—MAY VARY WITH OTHER MANUFACTURES.  
4. ROTATION IS COUNTERCLOCKWISE FACING SUCTION FLANGE.  
**WARNING: DO NOT OPERATE WITHOUT LIQUID IN PUMP. DO NOT OPERATE IN REVERSE ROTATION.**

CUSTOMER		
CUST. P.O.#		
TAG:		
FYBROC S/N		
<b>Fybroc Division</b> TELFORD, PA 18969 1630 SCALE DRAWN BY <i>BLP</i> GROUP 2 ~ APPROVED BY		
TITLE OUTLINE DRAWING		
DATE 6/22/94	DRAWING NUMBER C40124	REV.