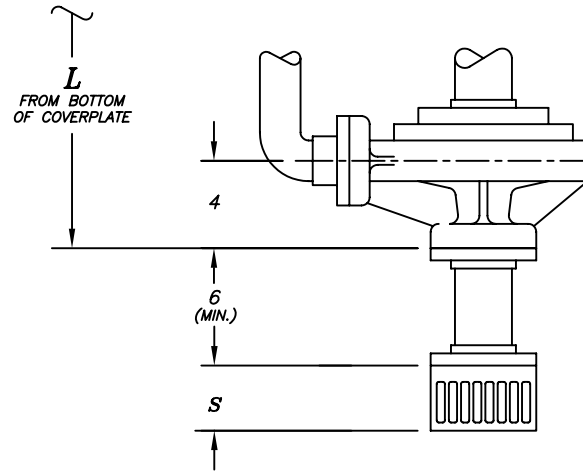
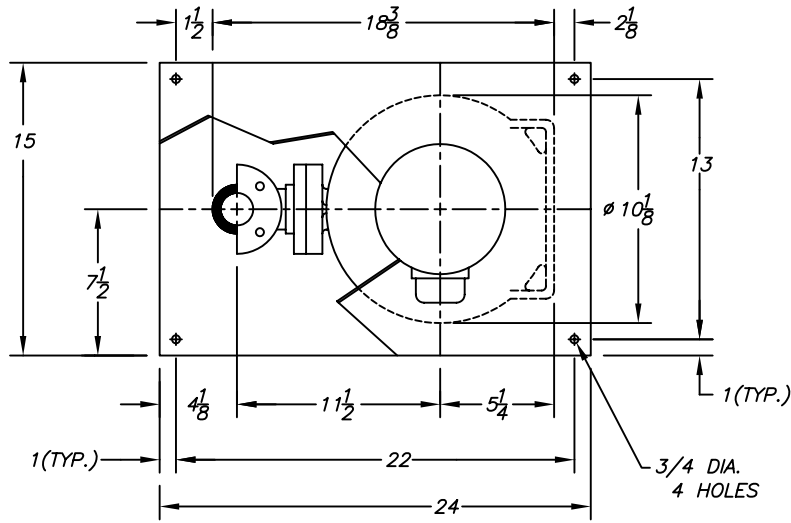


DATE	SYN.	REVISION RECORD	AUTH.	DR.	CK.



TAILPIPE ASSEMBLY
(OPTIONAL)

PUMP SIZE	S
1X1-1/2X6	3 1/8
1-1/2X3X6	4 1/2
2X3X6	4 1/2
1X1-1/2X8	3 1/8

MOTOR FRAME	A
143TC/145TC	20 3/4
182TC/184TC	25 5/8
213TC/215TC	28 3/8
254TC/256TC	34 5/8

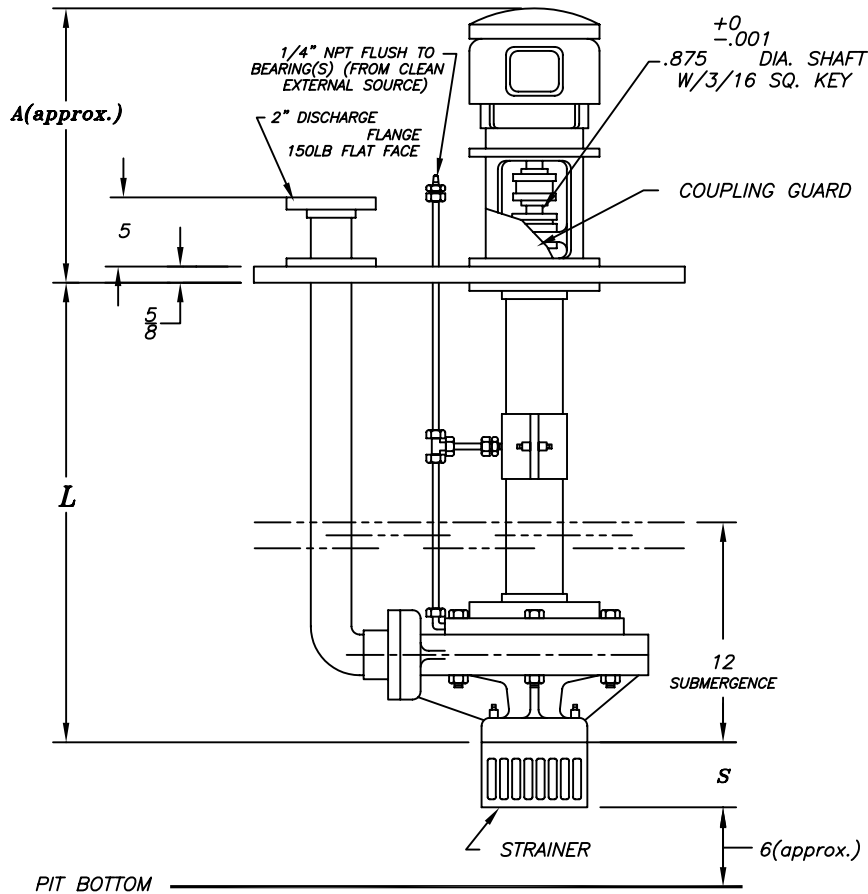
MOTOR		
HP	RPM	
PH	HZ	VOLTS
ENCL.		
FRAME		

CUSTOMER	
CUST.P.O.#	
TAG:	
FYBROC S/N	

NO.	L	BRGS	WEIGHT APPROX.*
1	18"(1'-6")	1	118
2	24"(2'-0")	1	121
3	30"(2'-6")	1	124
4	36"(3'-0")	1	128
5	42"(3'-6")	2	135
6	48"(4'-0")	2	138
7	54"(4'-6")	2	141
8	60"(5'-0")	2	145
9	66"(5'-6")	2	148
10	72"(6'-0")	3	155
11	78"(6'-6")	3	159
12	84"(7'-0")	3	162
13	90"(7'-6")	3	165
14	96"(8'-0")	3	168
15	102"(8'-6")	4	176
16	108"(9'-0")	4	179
17	114"(9'-6")	4	182
18	120"(10'-0")	4	186
19	126"(10'-6")	4	189

*-LESS, MOTOR AND TAILPIPE

- NOTES:
1. MOTOR SHIPPED SEPARATELY FOR FIELD MOUNTING BY OTHERS.
 2. ALL DIMENSIONS IN INCHES.
 3. EXPANSION JOINT IS RECOMMENDED FOR DISCHARGE CONNECTION.
 4. COVERPLATE TO BE SUPPORTED ON ALL FOUR SIDES.
 5. ALL FLANGE GASKETS ARE TO BE FULL FACE GASKETS.



Fybroc Division		TELFORD, PA 18969
SCALE	DRAWN BY	829
	APPROVED BY	
TITLE: 5500 GRP.1 OUTLINE DRAWING		
DATE: 7/7/87	DRAWING NUMBER: C 40127	REV.: