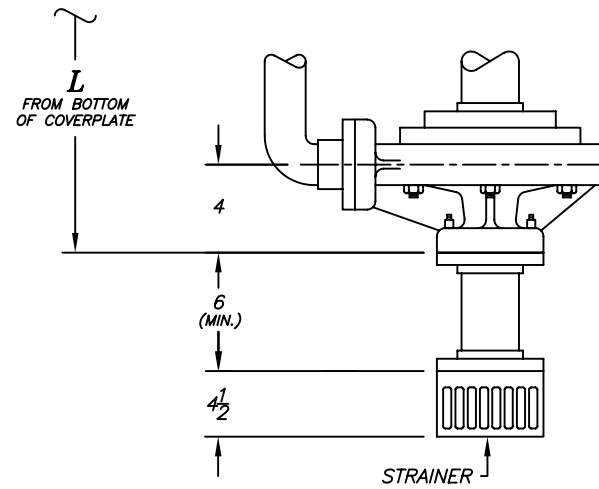
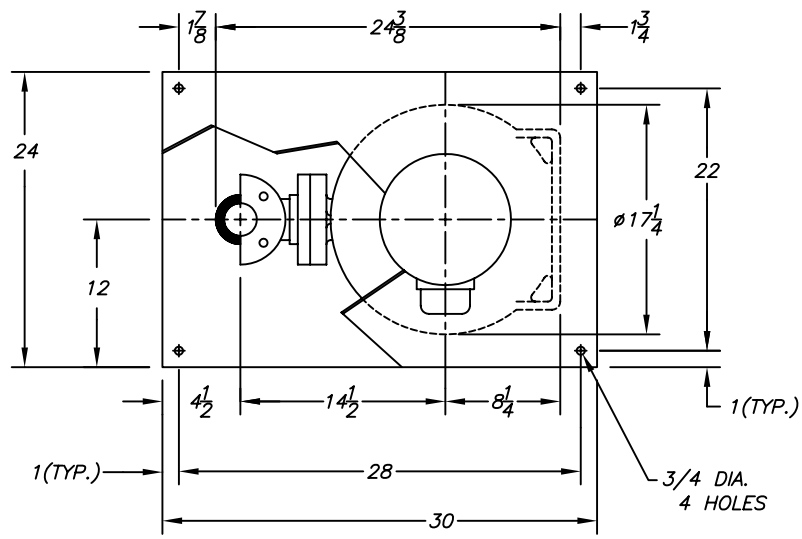
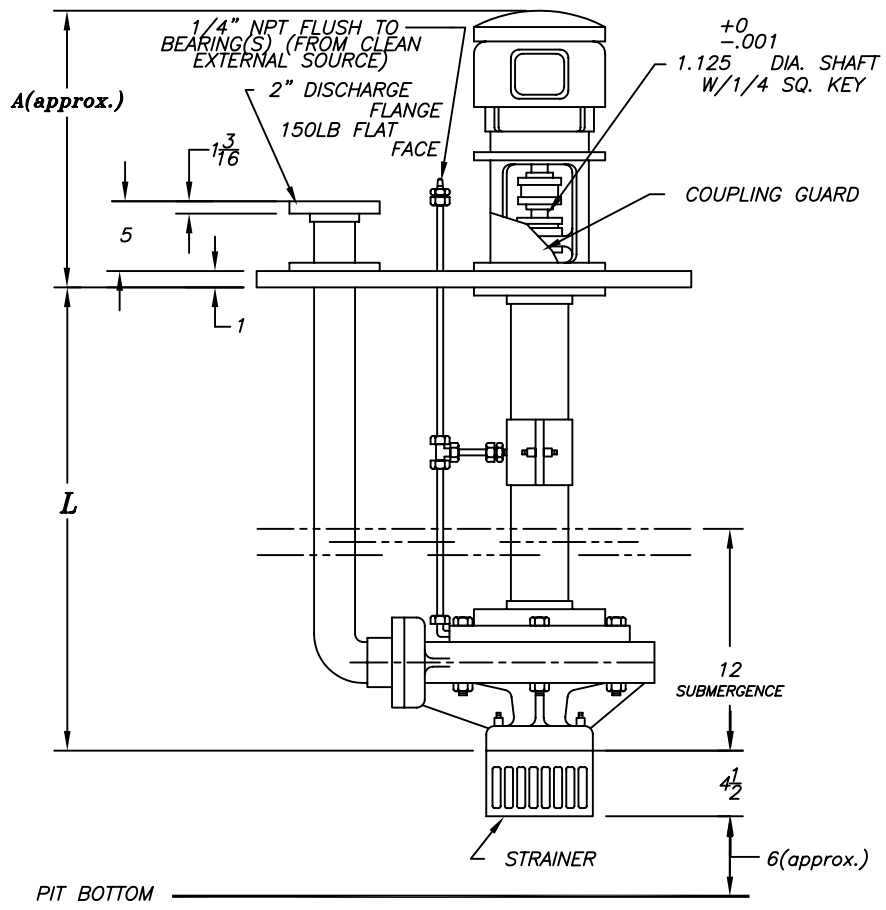


DATE	SYM.	REVISION RECORD	AUTH.	DR.	CK.



TAILPIPE ASSEMBLY
(OPTIONAL)



MOTOR FRAME	A
182TC/184TC	27 3/8
213TC/215TC	31 5/8
254TC/256TC	36 7/8
284TC/286TC	37 3/8
324TC/326TC	40 7/8

MOTOR		
HP	RPM	
PH	HZ	VOLTS
ENCL.		
FRAME		

CUSTOMER
CUST. P.O.#
TAG:
FYBROC S/N

NO.	L	BRGS	WEIGHT APPROX.
1	18-3/8" (1' 6-3/8")	1	-
2	24-3/8" (2' 3/8")	1	-
3	30-3/8" (2' 6-3/8")	1	-
4	36-3/8" (3' 3/8")	1	-
5	42-3/8" (3' 6-3/8")	2	-
6	48-3/8" (4' 3/8")	2	-
7	54-3/8" (4' 6-3/8")	2	-
8	60-3/8" (5' 3/8")	2	-
9	66-3/8" (5' 6-3/8")	2	-
10	72-3/8" (6' 3/8")	3	-
11	78-3/8" (6' 6-3/8")	3	-
12	84-3/8" (7' 3/8")	3	-
13	90-3/8" (7' 6-3/8")	3	-
14	96-3/8" (8' 3/8")	3	-
15	102-3/8" (8' 6-3/8")	4	-
16	108-3/8" (9' 3/8")	4	-
17	114-3/8" (9' 6-3/8")	4	-
18	120-3/8" (10' 3/8")	4	-
19	126-3/8" (10' 6-3/8")	4	-

*-LESS, MOTOR AND TAILPIPE

- NOTES:
1. MOTOR SHIPPED SEPARATELY FOR FIELD MOUNTING BY OTHERS.
 2. ALL DIMENSIONS IN INCHES.
 3. EXPANSION JOINT IS RECOMMENDED FOR DISCHARGE CONNECTION.
 4. COVERPLATE TO BE SUPPORTED ON ALL FOUR SIDES.
 5. ALL FLANGE GASKETS ARE TO BE FULL FACE GASKETS.

Fybroc Division		TELFORD, PA 18969	
5500 GRP.2		SCALE	DRAWN BY 829
2X3X10		~	APPROVED BY
TITLE OUTLINE DRAWING			
DATE 5/10/94	DRAWING NUMBER C40132	REV.	

PIT BOTTOM