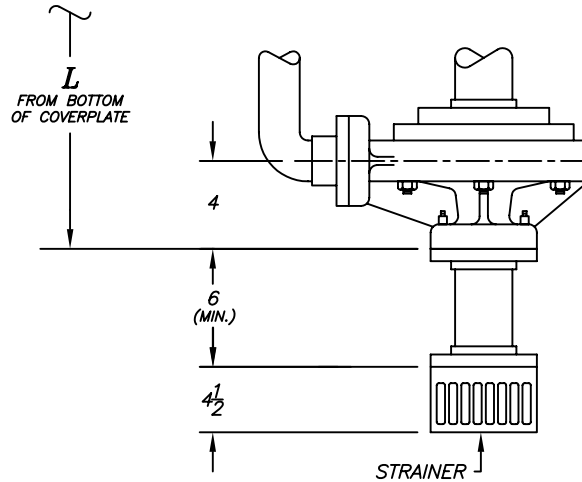
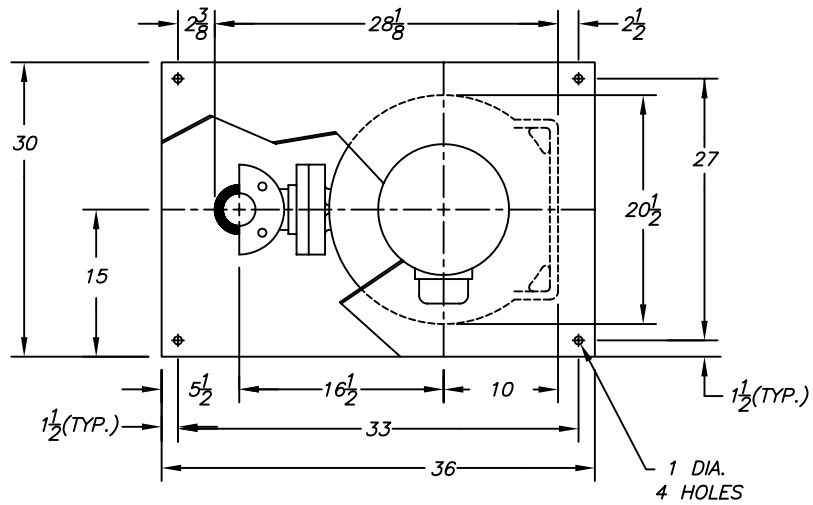
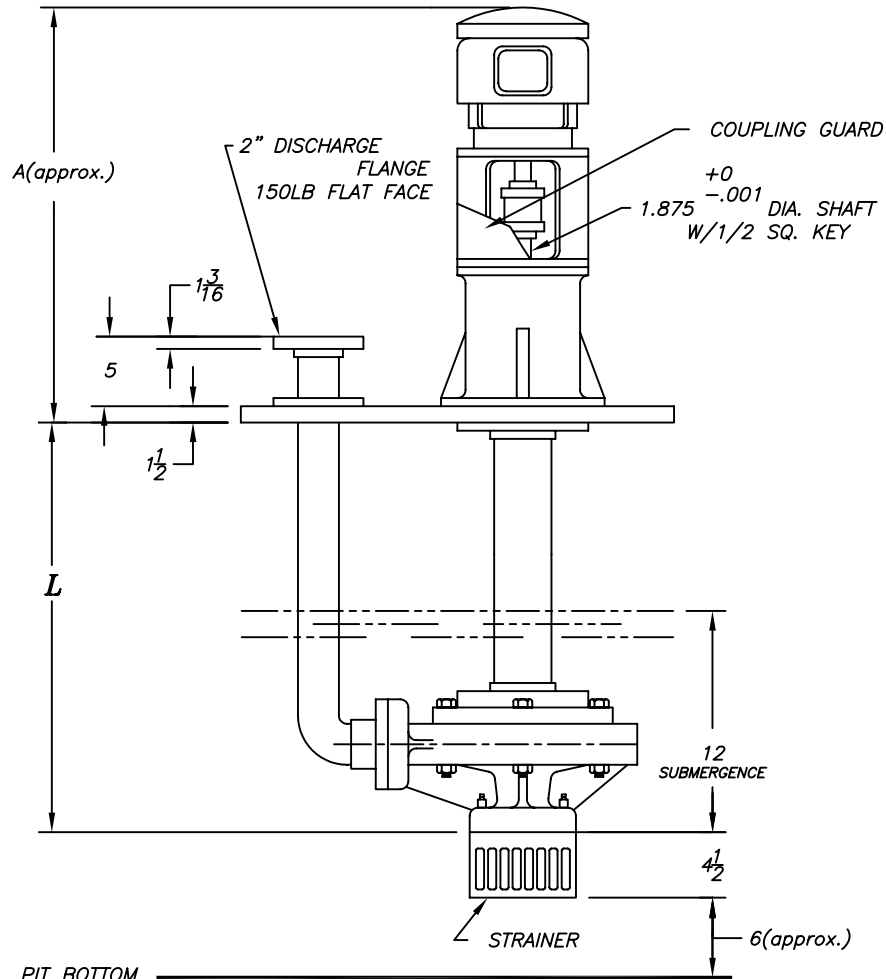


DATE	SYM.	REVISION RECORD	AUTH.	DR.	CK.



TAILPIPE ASSEMBLY
(OPTIONAL)



MOTOR FRAME	A
213TC/215TC	47 5/8
254TC/256TC	52 1/8
284TC/286TC	54 3/8

MOTOR	HP	RPM
ENCL.	HZ	VOLTS
FRAME		

CUSTOMER
CUST. P.O.#
TAG:
FYBROC S/N

NOTES:

- "L" DIMENSION IS SPECIFIED BY CUSTOMER WHEN ORDER IS ENTERED. "L" MAX.=48"
- MOTOR SHIPPED SEPARATELY FOR FIELD MOUNTING BY OTHERS.
- ALL DIMENSIONS IN INCHES.
- EXPANSION JOINT IS RECOMMENDED FOR DISCHARGE CONNECTION.
- COVERPLATE TO BE SUPPORTED ON ALL FOUR SIDES.
- ALL FLANGE GASKETS ARE TO BE FULL FACE GASKETS.

Fybroc Division		TELFORD, PA 18969	
7500 2X3X13	SCALE ~	DRAWN BY ELJ	APPROVED BY
TITLE OUTLINE DRAWING			
DATE 5/27/94	DRAWING NUMBER C40148	REV.	